

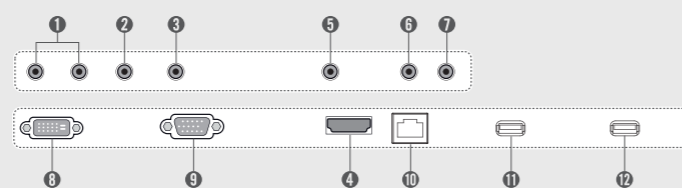
Specifications

SE3B Series	65SE3B	55SE3B	49SE3B	43SE3B	32SE3B
PANEL	Screen Size				
	65				
	Panel Technology				
	IPS				
	Aspect Ratio				
	16 : 9				
	Native Resolution				
	1,920 x 1,080 (FHD)				
	Brightness				
	400cd/m ² 350cd/m ² 350cd/m ² 350cd/m ² 350cd/m ²				
PHYSICAL SPECIFICATION	Contrast Ratio				
	1,300:1 1,100:1 1,100:1 1,100:1 1,100:1				
	Dynamic CR				
	500,000:1				
	Viewing Angle (H x V)				
	178 x 178				
	Response Time				
	10ms (G to G BW), 7.6ms (WOT) 12ms (G to G BW), 9.0ms (WOT) 12ms (G to G BW), 10.1ms (WOT) 12ms (G to G BW), 9.4ms (WOT) 10ms (G to G BW), 7.1ms (WOT)				
	Surface Treatment				
	Hard coating (3H), Anti-glare treatment of the front polarizer (Haze 1% (Typ.))				
CONNECTIVITY	Guaranteed Operating Hour				
	18 Hours				
	Orientation				
	Portrait & Landscape				
CONNECTIVITY	Input				
	HDMI, DVI-D, RGB, Stereo Mini Jack, USB (2)				
	Output				
	Stereo Mini Jack, External Speaker Out				
CONNECTIVITY	External Control				
	RS232C (In/Out), RJ45, IR Receiver				
	Bezel Color				
	Black				
PHYSICAL SPECIFICATION	Bezel Width				
	11.9mm (T/R/L), 18mm (B) 11.9mm (T/R/L), 18mm (B) 11.9mm (T/R/L), 18mm (B) 11.9mm (T/R/L), 18mm (B) 13mm (T/R/L), 18mm (B)				
	Monitor Dimensions (W x H x D)				
	1,456.9 x 838 x 41.1mm 1,238 x 714.9 x 38.6mm 1,102.2 x 638.5 x 38.6mm 969.6 x 563.9 x 38.6mm 729.4 x 428.9 x 55.5mm				
	Weight (Head)				
	27.7kg 17.3kg 14.1kg 9.8kg 5.2kg				
	Weight (Head + Stand)				
	32.9kg 20.6kg 17.4kg 12.3kg 6kg				
	Monitor with Optional Stand & Speaker Dimensions (W x H x D)				
	1,456.9 x 898.1 x 293.7mm 1,238 x 773.4 x 219.6mm 1,102.2 x 696.8 x 219.6mm 969.6 x 622.2 x 193mm 729.4 x 481 x 154.2mm				
SPECIAL FEATURES	Weight (Head + Stand + Speaker)				
	33.4kg 21.1kg 17.9kg 12.8kg 6.5kg				
	Carton Dimensions (W x H x D)				
	1,561 x 977 x 190mm 1,330 x 807 x 170mm 1,197 x 760 x 166mm 1,052 x 650 x 123mm 810 x 510 x 132mm				
	Packed Weight				
	33.6kg 21.5kg 17.2kg 12.4kg 6.5kg				
	VESATM Standard Mount Interface				
	300 x 300mm 200 x 200mm				
	USB Content Scheduling, Conformal Coating, SNMP Support, Wi-Fi Ready (Dongle), Power Management modes (Sustain Aspect Ratio/Stand-by Screen, etc.), No Signal Image setting, Enhanced ISM (Image Sticking Minimization) Mode, Holiday Schedule/Local Time Auto Setting, Fail-over (USB, RGB, DVI, HDMI), Wake on LAN				
	ENVIRONMENTAL CONDITIONS	Operating Temperature range			
0 °C to 40 °C 0 °C to 40 °C 0 °C to 40 °C 0 °C to 40 °C 0 °C to 40 °C					
Operating Humidity range					
10 % to 80 % 10 % to 80 % 10 % to 80 % 10 % to 80 % 10 % to 80 %					
POWER	Power Supply				
	100-240V~, 50/60Hz				
POWER CONSUMPTION	Power Type				
	Built-in Power				
POWER CONSUMPTION	Typ.				
	95W 70W 65W 60W 50W				
POWER CONSUMPTION	Smart Energy Saving				
	70W 55W 50W 45W 35W				
STANDARD (CERTIFICATION)	Safety				
	UL / cUL / CB / TUV / KC				
	EMC				
	FCC Class "A" / CE / KCC				
STANDARD (CERTIFICATION)	ErP / Energy Star				
	NA/NA NA/Yes NA/Yes NA/Yes NA/Yes				
MEDIA PLAYER COMPATIBILITY	OPS Type Compatible				
	No No No No No				
MEDIA PLAYER COMPATIBILITY	External Media Player Attachable				
	Yes (MP500/MP700) Yes (MP500/MP700) Yes (MP500/MP700) Yes (MP500/MP700) No				
SOFTWARE COMPATIBILITY	SuperSign W/Lite				
	Yes				
SOFTWARE COMPATIBILITY	SuperSign C				
	Yes				
ACCESSORY	Basic				
	Remote Controller (2 batteries included), Power Cord, QSG, RGB Cable, Regulation Book, Phone to RS232C Gender, IR Receiver				
	Speaker (SP-5000), Stand (ST-652T), Wall bracket (LSW350B), VESA Adapter (AM-B330S), Media Player				
	Speaker (SP-5000), Stand (ST-492T), Wall bracket (LSW350B), VESA Adapter (AM-B330S), Media Player Speaker (SP-5000), Stand (ST-492T), Wall bracket (LSW350B), VESA Adapter (AM-B330S), Media Player Speaker (SP-5000), Stand (ST-432T), Wall bracket (LSW230B), VESA Adapter (AM-B220S), Media Player Speaker (SP-5000), Stand (ST-322T), Wall bracket (LSW230B), Media Player				

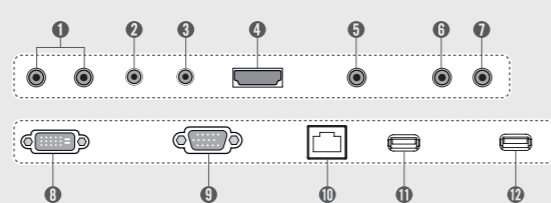
Connectivity

- 1 SPEAKER OUT
- 2 RS-232C IN
- 3 RS-232C OUT
- 4 HDMI
- 5 EXT IR IN
- 6 AUDIO IN
- 7 AUDIO OUT
- 8 DVI-D IN
- 9 RGB IN
- 10 LAN
- 11 USB1
- 12 USB2

65SE3B



55SE3B / 49SE3B / 43SE3B / 32SE3B



Download LG Commercial Display Mobile App



More info www.lgcommercial.com

YouTube [youtube.com/c/LGCommercialDisplay](https://www.youtube.com/c/LGCommercialDisplay)

LG may make changes to specifications and product descriptions without notice.
Copyright © 2015 LG Electronics Inc. All rights reserved. "LG Life's Good" is a registered of LG Corp.
The names of products and brands mentioned here may be the trademarks of their respective owners.



Simple Way to Manage Your Digital Signage Standard Essential SE3B Series



Simplify promotion content or sales information management with the LG SE3B Series that satisfies a wide range of display purposes in your business. This series has a practical design with a slimmer bezel and depth for optimum space utilization. Multiple screen sizes ensure the best selection for your business environment.

Key Features

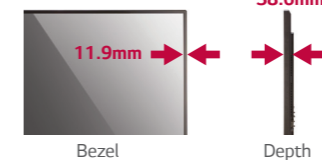
Enhanced Design Configuration



Slim

Slimmer Bezel & Depth

The thinner bezel & depth allows a perfect fit for a sleek look.

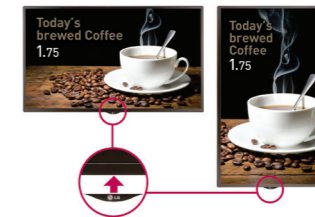


Bezel

Depth

Detachable Logo

Portrait mode allows the logo to be positioned in the desired setting.



Cable Management

The well-organized cable terminals in the back optimize available space.



USB Content Management



USB Content Scheduling

Play and schedule contents with a USB connection-no server connection required.



*Supported Content Type : Video (MPEG1/2/4, H.264), Audio (MP3, AC3, MPEG, AAC, HEAAC, LPCM), Image (JPEG, PNG, BMP)

Dust & Humidity Protection



Conformal Coating

Circuit board reliability is enhanced with conformal coating that protects against dust, iron powder, humidity and other harsh conditions.



Simple Way to Manage Your Digital Signage

Standard Essential SE3B Series



Screen Sizes
65"/55"/49"/43"/32"

SE3B Series

- Edge-lit LED
- Brightness: 350cd/m² (65" 400cd/m²)
- Bezel : Top/Left/Right 11.9mm (Bottom 18.0mm)
- Depth : 38.6mm (65" : 41.1mm, 32" : 55.5mm)
- Special : Wi-Fi Dongle Ready, SuperSign W/C/M
- Local Time Auto Setting
- HDMI/DVD-D/RGB/RJ 45, RS232C in/out, 2 USB ports
- Embedded Media Player

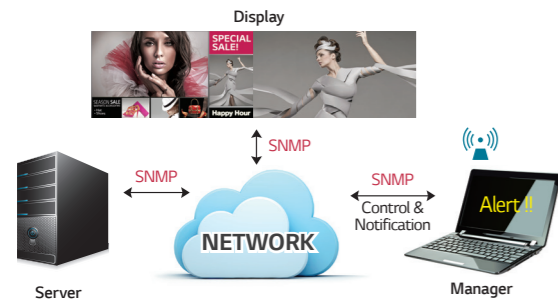


Other Features

Remote Management

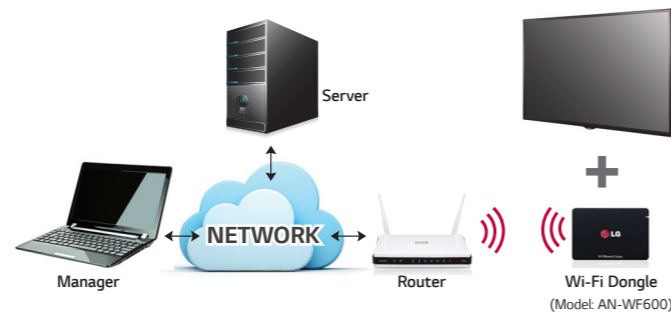
Simple Network Management Protocol

SNMP support ensures convenient network management.



Wi-Fi Support

SE3B Series support Wi-Fi USB dongle connection for convenient content distribution.



Convenient Screen Mode

Aspect Ratio Sustainability*

Sustain the same resolution and picture quality while powering on/off by receiving EDID¹⁾ through switch IC.



Stand-by Screen*

Even without signal from the media player, the network does not turn off completely, so remote control is possible, which prevents unnecessary power usage and enables efficient management.



Scheduled Screen Wash**

Prevent residual images with the screen transition feature.



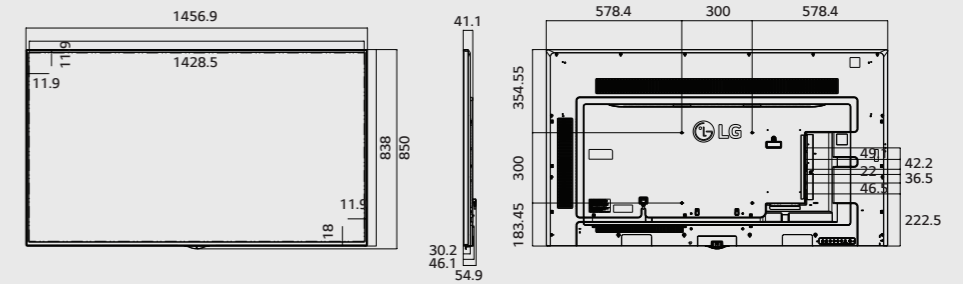
1) Extended Display Identification Data.
* Installation Menu > LG Digital Signage > PM Mode

** Installation Menu > ISM Method

Dimension (unit : mm)

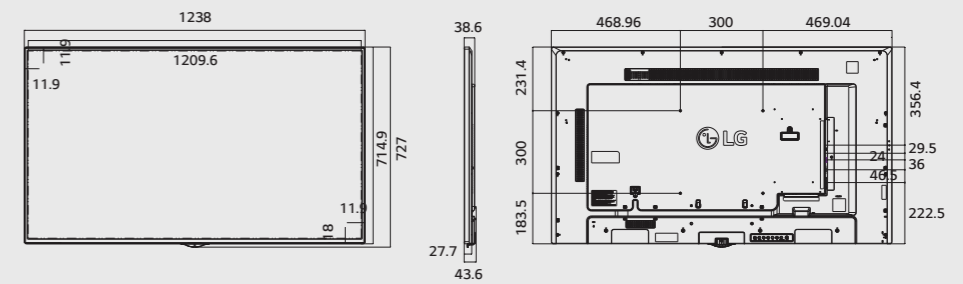
65"

1,456.9 x 838 x 41.1 /
27.7kg



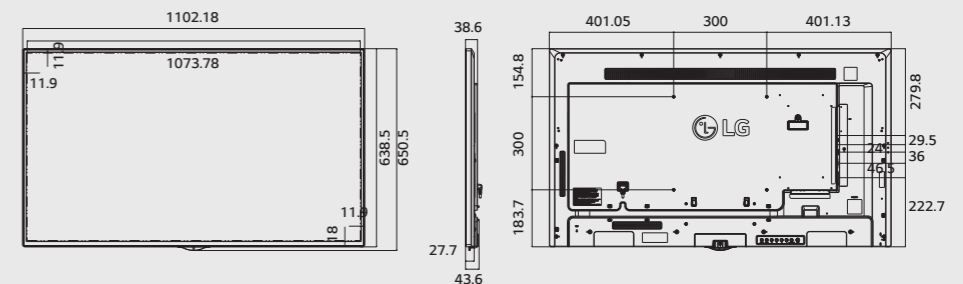
55"

1,238 x 714.9 x 38.6 /
17.3kg



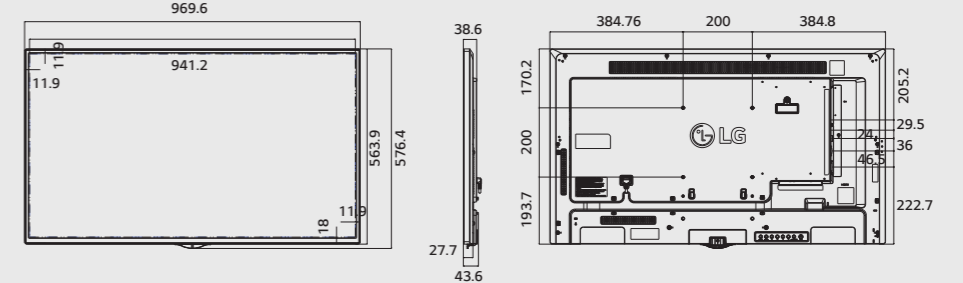
49"

1,102.2 x 638.5 x 38.6 /
14.1kg



43"

969.6 x 563.9 x 38.6 /
9.8kg



32"

729.4 x 428.9 x 55.5 /
5.2kg

